

Quantitative Standards Compliance Matrix - 4 Bed 7 Person House

| Standards | Min Floor Area | Min Living Room Area | Aggregate Living Area | Min Living Room Width | Min Storage Area | Aggregate Bedroom Area | Master Bed Size | Double Bed Size | Double Bed Width | Single Bed Size | Single Bed Width | Parking Spaces | Private Open Space |
|--|---|----------------------|-----------------------|-----------------------|------------------|------------------------|-----------------|-----------------|------------------|-----------------|------------------|----------------|--------------------|
| Quality Housing / Fingal Standards | 120.0m² | 15.0m² | 40.0m² | 3.8m | 6.0m² | 43.0m² | 13.0m² | 11.4m² | 2.8m | 7.1m² | 2.1m | - | 75.0m² |
| Standard Provided | 150 m² | 16.9 m² | 40.0 m² | ✓ | 10.6 m² | 56.9 m² | 16.2 m² | 11.5 m² | ✓ | 9.2 m² | ✓ | 2 | 75.5 m² |
| References Quality Housing For Sustainable Communities - 2007 | Notes: **Private Open Space includes ground floor and upper level terraces. Ground floor private open space will vary between plots. | | | | | | | | | | | | |

| Area |
|--|
| Level 0 53 m² |
| Level 1 59 m² |
| Level 2 38 m² |
| TOTAL 150 m² |
| Glenveagh 4 bed target area: 131m², 150m² & 175m² |
| Note: Area measured according to RICS |

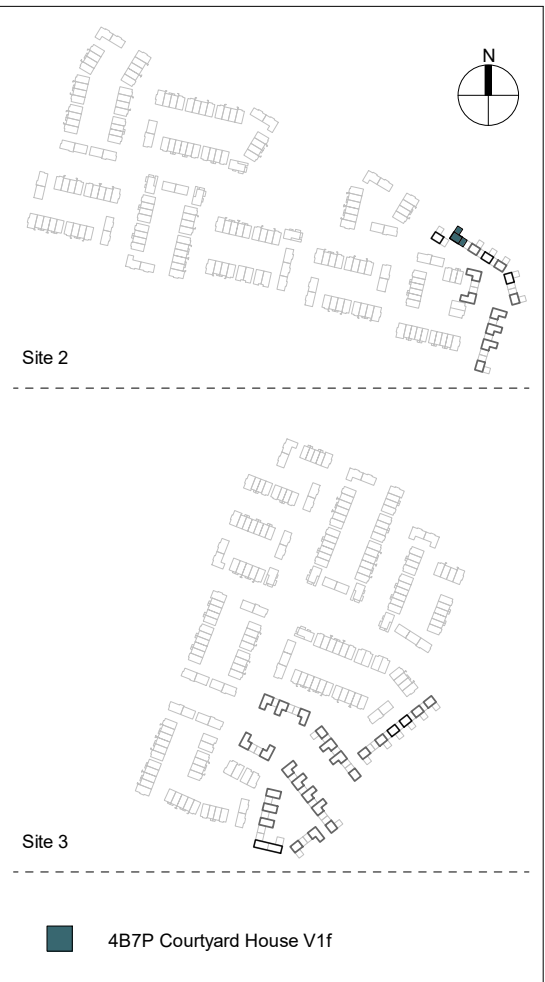
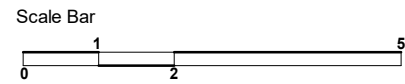
| Quantity |
|----------|
| 1 |

- general notes
1. This drawing is copyright Proctor and Matthews Architects and must not be copied in whole or part without prior consent.
 2. Do not scale from this drawing.
 3. Refer to drawing number.
 4. This drawing is to be read in conjunction with all other relevant architects and engineer's drawings.
 5. All dimensions to be checked on site prior to commencement of works and any discrepancies are to be checked with the architect immediately.
 6. Unless otherwise stated all dimensions are in mm.

Typology Notes

- Main Entrance Main entrance
- Home Office Area
- Air Source Heat Pump
- Service Intake Cupboard
- Storage Area

Floor to floor: 2790mm
Floor to ceiling: 2450mm
Floor zone: 340mm



| | | | |
|-----|----------|--------------|----|
| P03 | 08.12.21 | For Planning | LG |
| P02 | 08.11.21 | For Planning | LG |
| P01 | 26.10.21 | For Planning | LG |
| / | 19.03.21 | For Planning | HS |
| rev | date | description | dw |

client Glenveagh

project A496 Lands at Hollystown-Kilmartin

status S4 - Suitable for stage approval

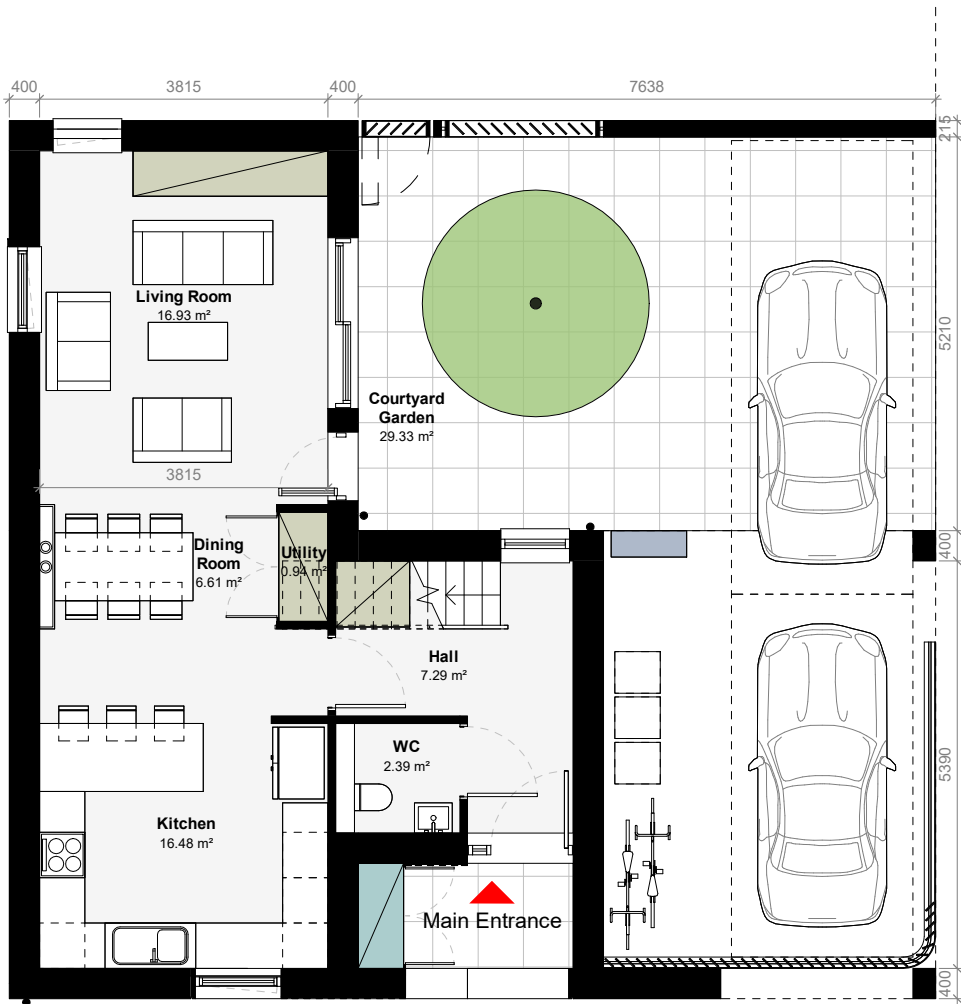
drawing title 4 Bed 7 Person 3 Storey Courtyard House V1f - Plans

drawing no A496-PMA-XX-XX-DR-A-1015

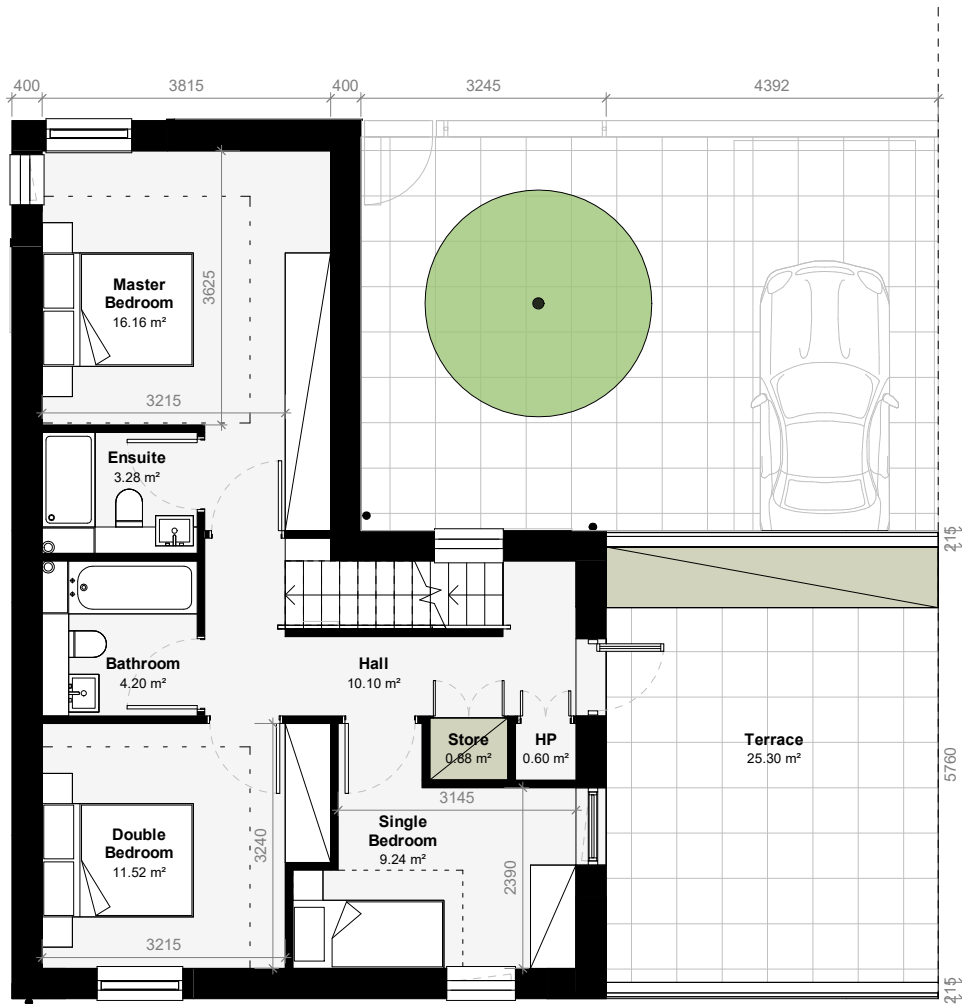
| project no - originator - volume - level - type - role - number |
|---|
| scale 1:100 date 15/03/21 drawn MCG |
| original A2 revision P03 checked CM |

Proctor & Matthews Architects

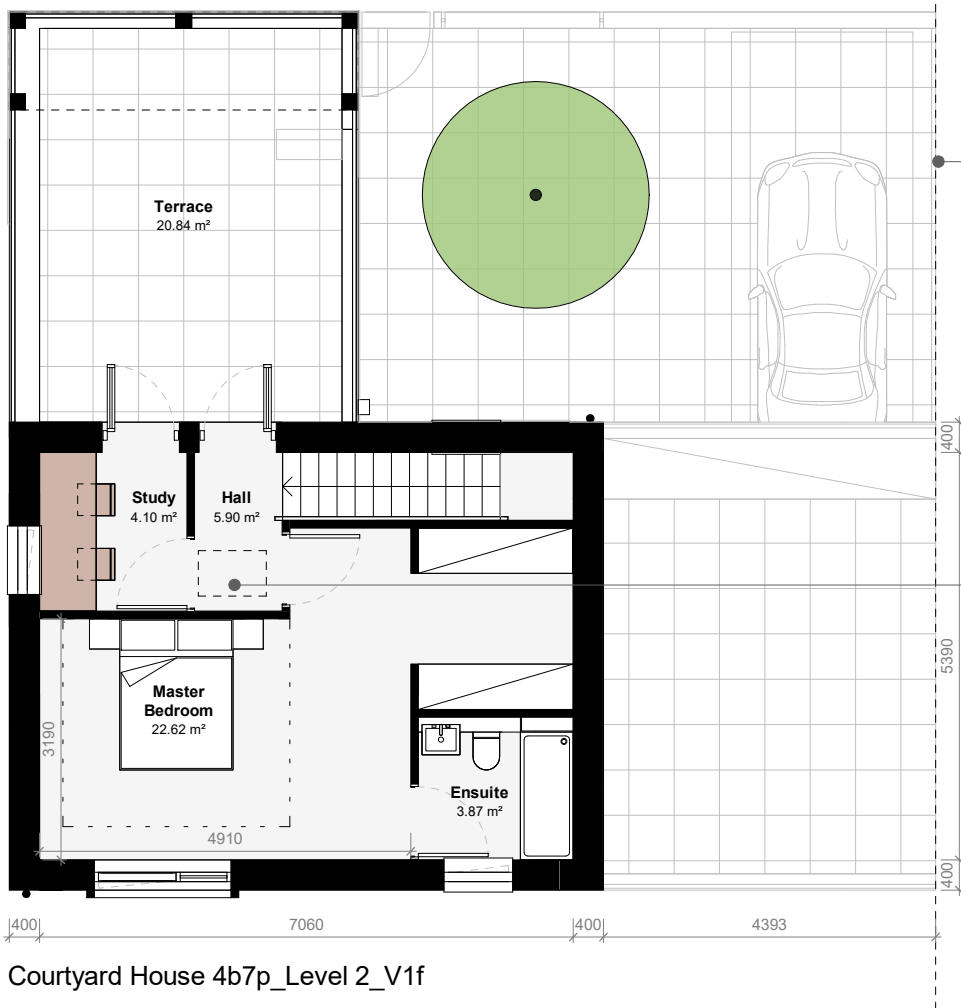
address 7 Blue Lion Place, 237 Long Lane, London SE1 4PU
telephone +44 (0)20 7378 6695
fax +44 (0)20 7378 1372
email info@proctorandmatthews.com
website www.proctorandmatthews.com



Courtyard House 4b7p_Level 0_V1f

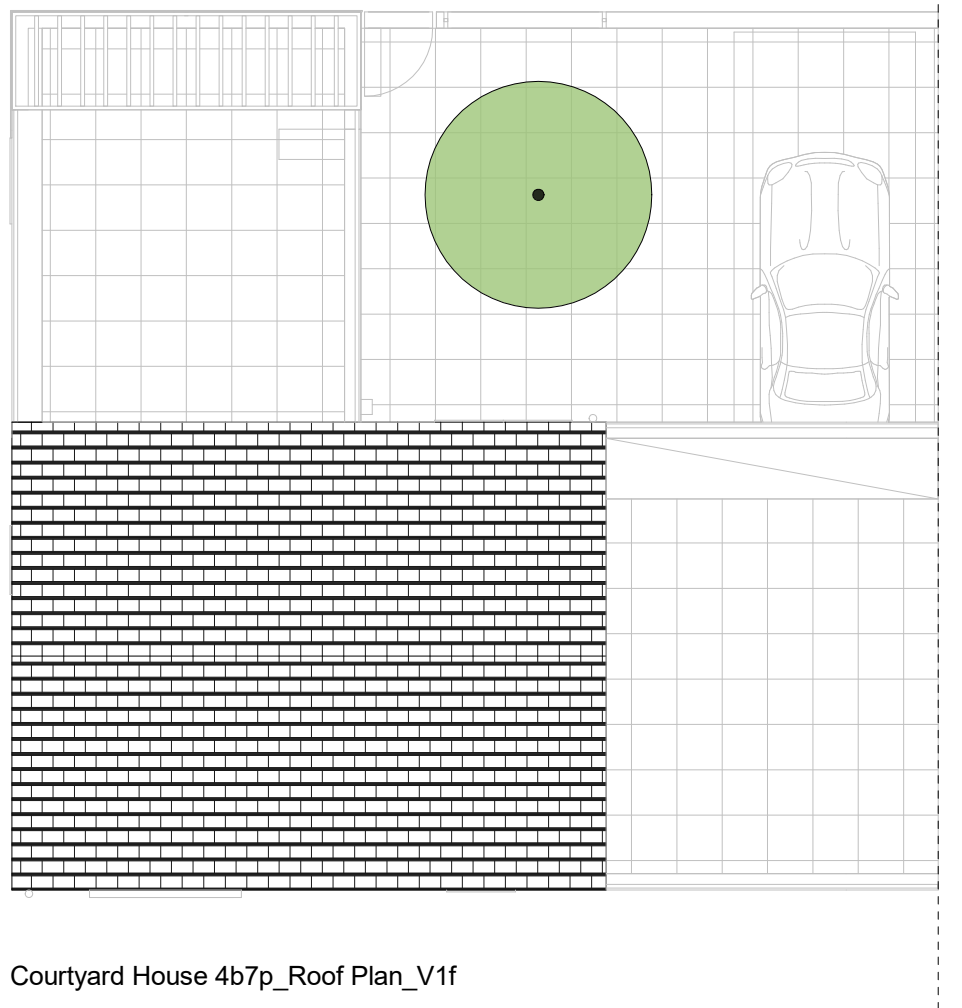


Courtyard House 4b7p_Level 1_V1f



Courtyard House 4b7p_Level 2_V1f

Plot 10



Courtyard House 4b7p_Roof Plan_V1f